

# Batteries

## E-Series Lithium Battery 48V

ePropulsion motors are optimised when connected to ePropulsion batteries... a one-make system eliminates compatibility issues and provides more data to the user. The 48 V E-Series batteries work seamlessly with all ePropulsion 48 V motors (Spirit, Navy, Evo), and use LifePO4 (lithium iron phosphate) chemistry, which is safe, stable and long-lasting (retaining over 80% capacity after 3000 charge cycles). E-Series are much more compact and lightweight than lead acid batteries, making it easier to install sufficient capacity in a convenient space.

### E60

3072 Wh / 48 V



### E163

8345 Wh / 48 V



	E60	E163
Capacity	3072 Wh / 60 Ah	8345 Wh / 163 Ah
Rated Voltage	51.2 V	51.2 V
Battery Life	3,000 cycles at 80% DOD	3,000 cycles at 80% DOD
Weight	33 kg / 72.8 lbs	76 kg / 167.6 lbs
Cut-off Voltage	41.6 V	41.6 V
Final Charging Voltage	57.6 V	57.6 V
Serial Connection	N/A	N/A
Max Continuous Discharging Current	70 A	150 A
Parallel Connection	Up to 16	Up to 16
Cell Configuration	16S4P	16S1P
Charger	E-Series battery charger	E-Series battery charger
Charger	E-Series battery charger	E-Series battery charger
Charging Time (220 V)	One charger: 2.7 hrs Two chargers in parallel: 1.3 hrs	One charger: 7.2 hrs Two chargers in parallel: 3.6 hrs
Charging Time (110 V)	One charger: 4 hrs Two chargers in parallel: 2 hrs	One charger: 11 hrs Two chargers in parallel: 5.4 hrs
Charging Temperature	0 to 55°C (32 to 131°F)	0 to 55°C (32 to 131°F)
Discharging Temperature	-10 to 60°C (14 to 140°F)	-10 to 60°C (14 to 140°F)
Shipping Classification	UN3480, Class 9, UN38.3 Certified	UN3480, Class 9, UN38.3 Certified
Certifications	CE, UKCA, FCC	CE, UKCA, FCC

## G102-100 96V

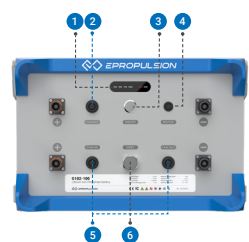
### Lithium Iron Phosphate Battery (LiFePO4)

High-performance and durable lithium battery for electric boating



Rated Voltage	102.4 V	Cell Configuration	32S1P
Cut-off Voltage	83.2 V	Charging Temperature	0 to 55°C
Final Charging Voltage	115.2 V	Discharging Temperature	-10 to 60°C
Serial Connection	N/A	Dimensions	680 x 500 x 300 mm (26.8 x 19.7 x 11.8 in)
Max Continuous Discharging Current	100 A	Weight	100 kg / 220.5 lbs
Battery Life	3,000 cycles at 80% DOD	Shipping Classification	UN3480, Class 9, UN38.3 Certified
Parallel Connection	Up to 8 in 1 cluster. Multiple clusters are possible in the system	Communication	One CAN for ePropulsion motors / One CAN (Two ports) for parallel batteries / One CAN for charger

### Design



- 1 LED display
- 2 Charge communication port
- 3 Power button
- 4 Motor communication port
- 5 CAN communication port
- 6 Vent valve

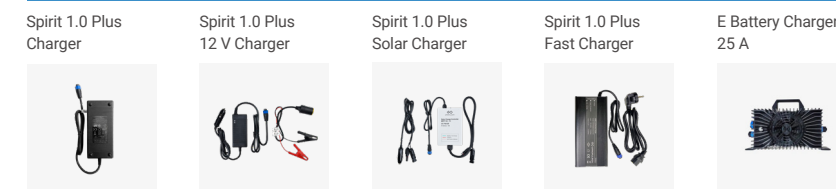
# Accessories

We strive to provide the highest quality accessories to enhance your boating experience. The full range of ePropulsion accessories and details are available at <https://www.epropulsion.com/accessories/>

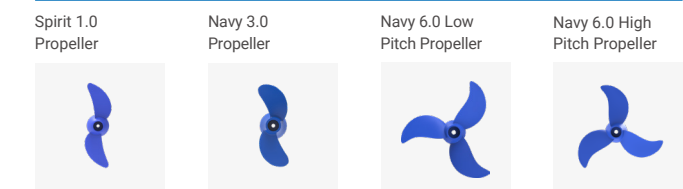
### Controls



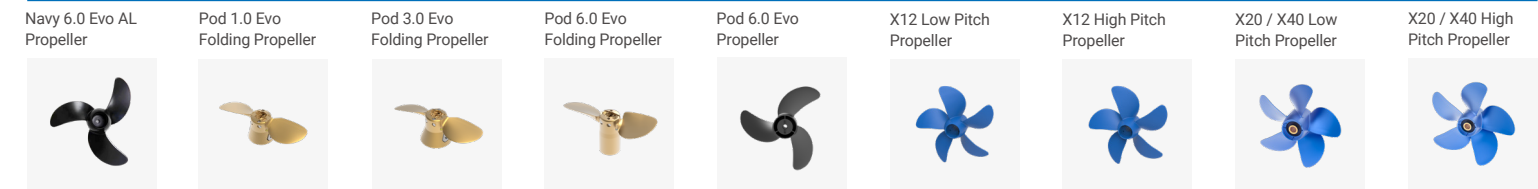
### Charging



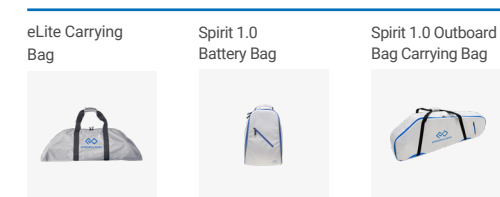
### Propellers



### Propellers



### Bags



[www.epropulsion.com](http://www.epropulsion.com)

- 2024 European Commercial Marine Awards Marine Power & Propulsion Category
- 2024 Boating Industry's 2024 Top Products
- 2024 Innovation Award in Miami International Boat Show
- 2023 European Commercial Marine Awards Innovations Showcase Category Award
- 2023 Sounding Trade Only's Most Innovative Company
- 2023 Boating Industry's Top Products
- 2023 Environmental Awards at Southampton International Boat Show
- 2021 British Yachting Award Equipment Innovation of the Year 2021
- 2015 German IF Design Award

Follow ePropulsion on



Version: V1.0 | Copyright © 2024 ePropulsion



# EPROPULSION ELECTRIC BOATING

2024 12 Years of Innovative Electric Marine Propulsion Systems and Services





# Electric Outboard Motor

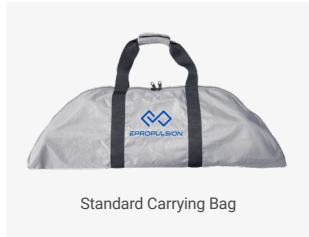


## eLite 500 W 1.5 HP comparable

The eLite redefines your on-water experience with innovative features and a commitment to sustainability. Designed to be the most compact and lightweight electric outboard in its class, weighing only 14.8 lbs, it is an easy-to-use alternative to small internal combustion engines for enthusiasts worldwide.

Nominal Power	500 W
Maximum Power (in Sport Mode)	750 W
Battery	Integrated 378 Wh 25.2 V Lithium-ion
Battery Life	800 cycles at 80% DOD
Charger	100 to 240 V AC charger included, 12 V charger optional
Cooling System	Natural cooling
Rated rpm	1500 to 1700
Operating Temperature	-5 to 55 °C
Storage Temperature	-20 to 45 °C
Trim and Tilt	8° / 17° / 26°
Tilt Angle	75°
Shallow Water Mode Tilt Angle	36°
Steering Range	±70°
Dimensions (L x W x H)	297 x 75 x 890 mm (11.7 x 3 x 35")
Motor Weight (excluding bracket)	6.7 kg / 14.7 lbs
Motor Weight (including bracket)	7.9 kg / 17.4 lbs
Adjustable Shaft Length	401 / 362.5 / 322 / 282.5 mm (15.8 / 14.27 / 12.7 / 11.1")

\*The specifications are for reference only.



Standard Carrying Bag

## Spirit Series 1 kW 3 HP comparable

The Spirit 1.0 Plus & Evo motors are our best-sellers. They're designed for portability, with an integrated, but easily-removable 1276 Wh lithium battery. The Spirit 1.0 Plus is made for dinghies, fishing boats, sailboats, and tenders, while the Spirit 1.0 Evo is best suited for dinghies, fishing boats, and sailboats.



	Spirit 1.0 Plus	Spirit 1.0 Evo	Spirit 1.0 Evo Remote
Power	1000 W		
Battery Capacity	1276 Wh		
Motor Weight*	10.6 kg / 23.4 lbs	11.3 kg / 24.9 lbs	10.9 kg / 24 lbs
Battery Weight	8.7 kg / 19.2 lbs		
Charging Time	3.5 hrs (Fast charger) / 8.5 hrs (Standard charger)		
Battery Life*	500 cycles at 80% DOD		
Shaft Length	XS: 52.5 cm / 20.7 in S: 62.5 cm / 24.6 in L: 75 cm / 29.5 in	S: 62.5 cm / 24.6 in L: 75 cm / 29.5 in	
Input Voltage	39 to 60 V		
Propeller rpm	1200 rpm		
Propeller	11" x 5.8" 2-blade composite propeller		
Trim / Tilt Angle	0°, 7°, 14°, 21° / 70°	0°, 7°, 14°, 21° / 85°	0°, 7°, 14°, 21° / 85°
Hydrogeneration	✗	✓	✓
Display Backlight	✗	✓	✓

\*Weight quoted is for the short shaft version. The weight of Spirit 1.0 Evo Remote excludes the control.

\*Battery life is based on laboratory testing. Actual battery life may vary depending on operational environment and usage conditions.

### Floating Battery

The Spirit series battery is removable for better portability and easier installation. But there's always a slight risk you could drop it in the water! That's why we developed the Spirit battery to float!



Spirit Battery



## Navy Series 3 kW / 6 kW

6 / 9.9 HP comparable

The Navy Series is the backbone of ePropulsion electric outboard motors. It provides efficient and clean power for aluminum fishing boats, dinghies, daysailers, pontoon and cruising sailboats, suitable for saltwater and freshwater. Thanks to the direct-drive technology, the Navy electric outboard boat motor is quiet, low maintenance, and reliable.



Navy 3.0 Evo  
3 kW

Navy 6.0 Evo  
6 kW



	Navy 3.0 Evo	Navy 6.0 Evo
Power	3 kW	6 kW
Operation Voltage	48 V (Input Range 39 to 60 V)	
Outboard Weight*	24.3 kg / 53.6 lbs	29 kg / 64.0 lbs
Shaft Length	S: 63.4 cm / 25 in L: 75.9 cm / 29.9 in	
Static Thrust	590 N / 132.6 lbs	1243 N / 279.4 lbs (13.4" x 8.5" composite propeller)
Propeller rpm	2300 rpm	1500 rpm
Propeller	10.2" x 6.7" 2-blade composite propeller	11.3" x 8.5" plastic propeller 10.6" x 12.6" metal propeller(optional)
Trim / Tilt Angle	Navy 3.0 Evo: 0°, 5°, 10°, 15° / 60°	Navy 6.0 Evo: 0°, 5°, 10°, 15°, 20°, 35°, 50° / 65°, 80°
Hydrogeneration*	✓	✓

\*The outboard motor weight quoted is for the short shaft version, excluding the control weight.

\*The hydrogeneration data is based on real tests with the anticavitation plate installed. Navy 6.0 Evo is tested with a 13.4" x 8.5" three-blade composite propeller.

## X Series 12 kW / 20 kW / 40 kW

20 / 35 / 60 HP comparable

The X Series electric outboards are zero-emission electric propulsion systems with an industry-leading powertrain efficiency of 88.2%. The X Series features a compact & fully integrated design, electric steering system, advanced driving assistance functions, and connectivity service. The modular architecture not only simplifies installation but also allows for seamless integration with renewable energy sources.



X12  
12 kW

X20  
20 kW

X40  
40 kW

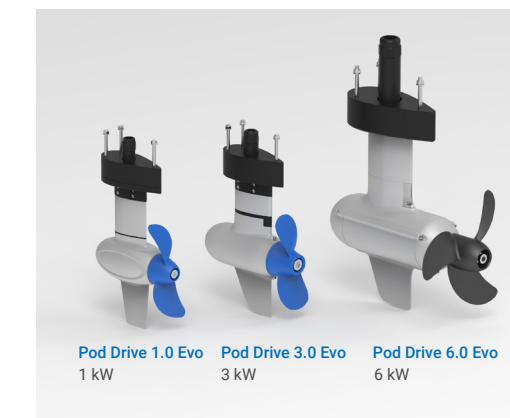


	X40 40 kW		X20 20 kW		X12 12 kW (Available in December)	
	L Shaft	XL Shaft	L Shaft	XL Shaft	S Shaft	L Shaft
Motor Weight (excluding control)	104 kg / 229.3 lbs	106 kg / 233.7 lbs	79 kg / 174.2 lbs	81 kg / 178.6 lbs	48 kg / 105.8 lbs	50 kg / 110.2 lbs
Shaft Length	508 mm (20")	635 mm (25")	508 mm (20")	635 mm (25")	381 mm (15")	508 mm (20")
Dimensions (L x W x H)	757 x 360 x 1233 mm (29.8 x 14.2 x 48.5")	757 x 360 x 1360 mm (29.8 x 14.2 x 53.5")	674 x 360 x 1229 mm (26.5 x 14.2 x 48.4")	674 x 360 x 1356 mm (26.5 x 14.2 x 53.4")	560 x 266 x 978 mm (22 x 10.5 x 38.5")	560 x 266 x 1105 mm (22 x 10.5 x 43.5")
Input Power	40 kW		20 kW		12 kW	
Nominal Voltage	96 VDC		96 VDC		96 VDC	
Cooling System	Closed loop liquid cooling		Natural cooling		Natural cooling	
Rated rpm	1500 to 2100		1200 to 1800		1100 to 2000	
Trim and Tilt	Power trim/tilt		Power trim/tilt		Power trim/tilt	
Trim / Tilt Angle	-4° to 61°		-4° to 61°		-4° to 61°	
Steering	Integrated electric steering		Integrated electric steering		Integrated electric steering	
Steering Angle	±45°		±45°		±45°	
Propeller	15" x 10 3/4" propeller (available in L&R rotation) 13 3/8" x 16 3/4" propeller (available in L&R rotation)		15" x 10 3/4" propeller (available in L&R rotation) 13 3/8" x 16 3/4" propeller (available in L&R rotation)		11 13/16" x 10 5/8" propeller (available in L&R rotation) 11 7/16" x 14 3/16" propeller (available in R rotation)	

# Pod Drive Motor

## Pod Drive Series

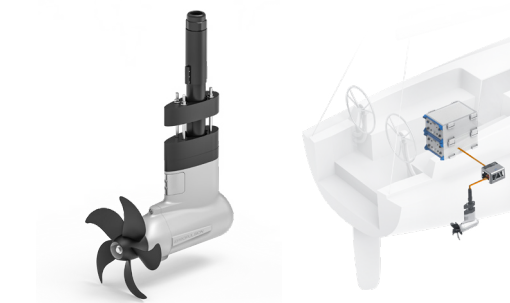
The ePropulsion pod drives are direct-drive and minimum maintenance electric motors for sailboats and small crafts. They're space-saving and maximize your cabin space. They're silence makes for a pleasurable experience onboard.



Pod Drive 1.0 Evo  
1 kW

Pod Drive 3.0 Evo  
3 kW

Pod Drive 6.0 Evo  
6 kW



## Pod Drive 1 kW / 3 kW / 6 kW 3 / 6 / 9.9 HP comparable

	Pod Drive 1.0 Evo	Pod Drive 3.0 Evo	Pod Drive 6.0 Evo
Power	1 kW	3 kW	6 kW
Operation Voltage	48 V (Input Range 39 to 60 V)		
Weight	6.2 kg / 13.7 lbs	15.3 kg / 33.7 lbs	31 kg / 68.3 lbs
Static Thrust	316 N / 71 lbs	590 N / 132.6 lbs	1080 N / 242.8 lbs
Propeller rpm	1200 rpm	2300 rpm	1500 rpm
Propeller	11" x 5.8" 2-blade composite propeller	10.2" x 6.7" 2-blade composite propeller	12.6" x 8.7" 3-blade aluminum propeller / 12" x 21.3" 2-blade NAB folding propeller (optional)
Hydrogeneration	✓	✓	✓

\*The weight includes the driver unit.

## Pod Drive 12 eSSA 12 kW (Available in December)

Input Power	12 kW
Nominal Voltage	96 VDC
Weight (driver unit included)	35 kg (77.2 lbs)
Dimensions (L x W x H)	Motor: 424 x 300 x 750 mm (16.7 x 11.8 x 29.5") Driver unit: 274 x 221 x 167 mm (10.8 x 8.7 x 6.6")
Cooling System	Motor: Natural cooling Driver unit: Air cooling
Rated rpm	1400 to 2100
Propeller	11 4/5" x 9 4/5" propeller (available in L&R rotation) 13" x 9 3/4" folding propeller

# Electric Inboard Motor



I-10  
10 kW

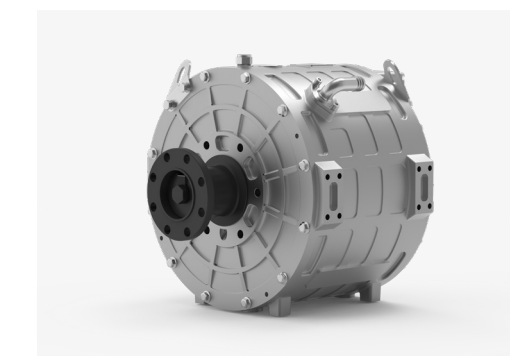
I-20  
20 kW

## I-Series 10 kW / 20 kW / 40 kW

The I-Series is an environmentally-friendly electric inboard motor series packed with innovative technology, smart features, and human operation design. Underpinned by the highly integrated and modular ePropulsion Smart System Architecture (eSSA) and the IoT connectivity service, it provides users with an easy-to-use, intelligent, safe, and reliable experience unlike any other.

Model	I-10	I-20	I-40
Input power	10 kW	20 kW	40 kW
Input voltage	86 to 115 VDC	86 to 115 VDC	86 to 115 VDC
Weight	45 kg / 99.2 lbs	49.5 kg / 109.1 lbs	93 kg / 205.0 lbs
Dimensions (L x W x H)	565 x 295 x 380 mm	580 x 330 x 380 mm	667 x 452 x 477 mm
Cooling method	Air cooling	Water cooling (air cooling optional)	Water cooling (air cooling optional)
Rated rpm	1200 to 1700	1200 to 1700	900 to 1500
Operation and interaction	Throttle & display	Throttle & display	Throttle & display
Connectivity service	Support	Support	Support

\*The specifications are for reference only.



## H-Series 60 to 250 kW

The H-Series inboard motors are engineered for larger sailing boats and motor vessels between 60 and 100' (18-30 m) with a full displacement of up to 200 tons, that delivers high performance with less noise, fewer vibrations, and zero exhaust fumes.

	H-60	H-85	H-100	H-140
Rated Voltage	540 VDC	540 VDC	540 VDC	540 VDC
Rated Power	60 kW	85 kW	100 kW	140 kW
Rated Torque	478 Nm	779 Nm	797 Nm	1121 Nm
Rated Speed	1150 rpm	1000 rpm	1150 rpm	1145 rpm
Weight	110 kg / 242.5 lbs	150 kg / 330.7 lbs	190 kg / 418.8 lbs	250 kg / 551.2 lbs
Dimensions	336 x 285 mm (13.2 x 11.2 in)	336 x 380 mm (13.2 x 15.0 in)	443 x 315 mm (17.4 x 12.4 in)	443 x 387 mm (17.4 x 15.2 in)
Rated Efficiency	96%	96%	96%	96%
Insulation Level	H	H	H	H
Cooling Methods	Water Cooling	Water Cooling	Water Cooling	Water Cooling
Operating Temperature	-25 to 55°C	-25 to 55°C	-25 to 55°C	-25 to 55°C
IP Rating	IP67	IP67	IP67	IP67

